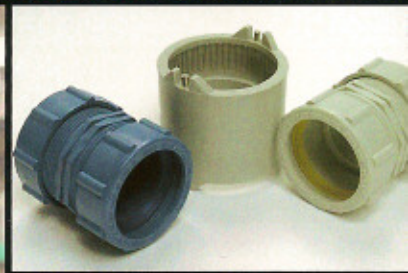
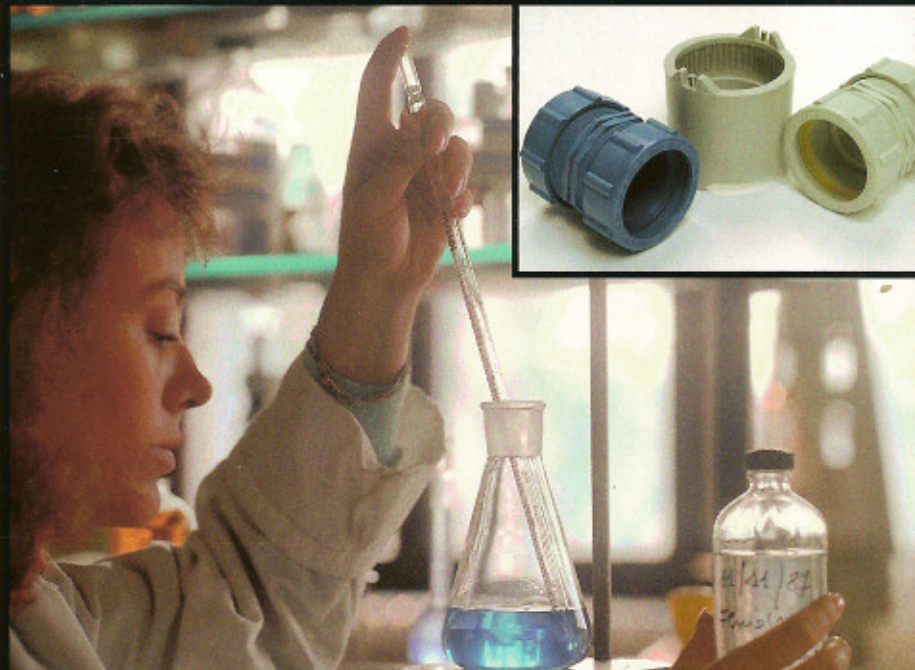


# Acid Waste Piping Systems



INDUSTRIAL SYSTEMS

## YOUR LAB SPECIALIST

- Enfield® Electrofusion Acid Waste Systems FRPP & PP
- Labline™ Mechanical-Joint Acid Waste System FRPP
- Plenumline™ Mechanical Joint Acid Waste System FR-PVDF
- Encase™ Double Containment System PP & FRPP
- Neutratanke® Neutralization Tanks HDPE & PP
- Floway™ Drains PP
- Neutrasytem2™ Monitoring

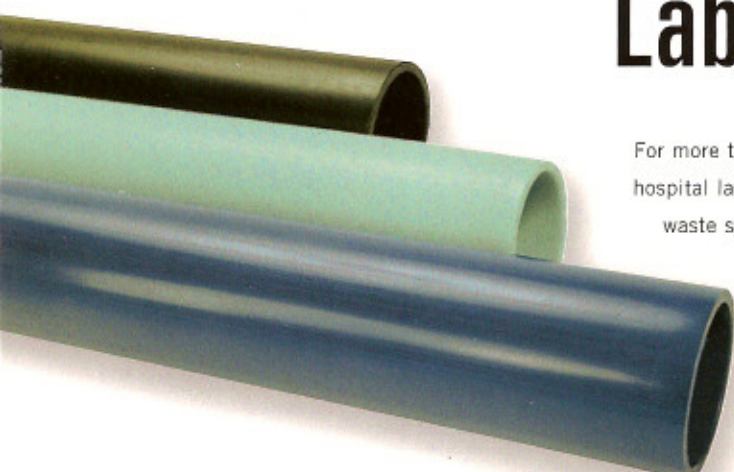
We build tough products for tough environments.™



**IPEX**  
Committed to Excellence



# Integrated Total Laboratory Solutions



For more than 30 years, IPEX has been supplying industrial, commercial, school and hospital laboratories throughout North America with high-quality, easy-to-install acid waste systems designed to handle a wide variety of chemicals and pH levels.

Our comprehensive line of dedicated acid waste conveyance, neutralization and monitoring systems offers innovative features not available with any other system. In fact, IPEX Enfield™ electrofusion and Labline™ mechanical joint systems have long been recognized as the industry benchmark for performance and reliability, and are among the most widely specified systems in North America. Also available through IPEX is the next generation, E-84 compliant, Plenumline™ system,

made of flame retardant PVDF for extremely demanding applications such as return air plenums.

The complete range of IPEX integrated total solutions for acid waste applications also includes our Neutratanke® neutralization tanks, Neutrasystem2™ pH monitoring system and Flowway™ drains, as well as Encase™ double containment systems.

## Your full-spectrum acid waste specialist

Increasingly stringent government and industry standards, along with the widespread public desire to minimize the impact of chemical waste on the environment, continues to make compliance a vital concern for our customers.

- IPEX offers a complete range of pipe and fittings in a variety of materials to suit any acid waste application.
- With the ability to handle intermittent temperatures from -20 °F to 210 °F and self extinguishing properties, our flame-retardant polypropylene (FRPP) systems are ideally suited for all above-grade laboratory applications.
- With identical chemical/temperature properties for below-grade installations, our non-flame-retardant polypropylene (NFRPP) is the material of choice.
- Specifically designed and approved for use in return-air plenums or higher temperature/higher concentration applications, IPEX offers a flame-retardant polyvinylidene fluoride (FR-PVDF) system.

Compared to conventional ductile iron and borosilicate glass systems, all three IPEX thermoplastic materials exhibit excellent resistance to a wide range of chemicals with pH from 1 to 13, will not corrode, rust, pit or scale and offer much greater flexibility/impact resistance. The result: far easier installations, low maintenance and substantial cost savings over the life of the systems.



## ENFIELD® Electrofusion Acid Waste Systems



The premier acid waste system on the market, Enfield polypropylene acid waste systems feature:

- A heavy-gauge, nickel-chromium resistance wire integrally molded into the fitting socket.
- Multiple joints completed simultaneously, using our microprocessor controlled Enfusion™ electrofusion unit creating a high-integrity bond between pipe and fitting – in a matter of minutes.



ENFIELD®

Material	Joint Type	Application	Size (in)
FRPP / NFRPP	Electrofusion/Permanent	Drainage	1½ to 12

## PLENUMLINE™ FR-PVDF Mechanical Joint Acid Waste System

Made from a specially formulated, flame-retardant polyvinylidene fluoride (PVDF), our Plenumline™ acid waste system:

- Meets the stringent specification of ASTM E-84 / UL 723.
- Although specifically designed for use in return-air plenums, Plenumline™ is also ideal for other specialized applications such as high-temperature or extremely aggressive media.
- Plenumline™ fittings incorporate our unique Elastolive™ joining system for unmatched joint integrity.



PLENUMLINE™

Material	Joint Type	Application	Size (in)
FR-PVDF	Mechanical/Re-usable	Return-Air Plenum/High Temp drainage	1½ to 4

## LABLINE™ Mechanical Joint Acid Waste Systems

**IPEX Labline™ polypropylene acid waste system features our state-of-the-art mechanical joining design using:**

- A no-heat Elastolive™ compression seal for fast installation and superior joint performance.
- Labline's™ patented grooved joint assembly, preventing leaks due to misalignment and potential pullout resulting from thermal contraction.



LABLINE™			
Material	Joint Type	Application	Size (in)
FRPP / NFRPP	Mechanical/Re-usable	Drainage	1½ to 4

## Encase™ Polypropylene Double Containment Systems

**Certain environments demand fail-safe systems. No leaks. No risk. The professionals at IPEX understand the complexity of design and installation for demanding double containment applications.**

At the heart of our Encase™ polypro system is our Enfield® electrofusion technology with its:

- Substantially lower installation costs, compared to traditional technologies.
- Heavy-gauge resistance wire molded into the fitting (carrier & containment) socket.
- Staggered design allowing for testing of the carrier pipe before the containment system is sealed.

The combined result is a premier off-the-shelf double containment system.



ENCASE™			
Material	Joint Type	Application	Size (in)
FRPP / NFRPP	Electrofusion/Permanent	Double Containment drainage	Carrier: 1½ to 8, Containment: 4 to 12

**Repeatable and controllable, both the Enfield® electrofusion, Labline™ and Plenumline™ mechanical joining processes allow full hydrostatic testing immediately after the joint is formed.**

## FLOWAY™ Polypropylene Floor Drains

For efficiently managing chemical spills, our Floway adjustable and non-adjustable polypropylene drain ports are specially designed to feed into IPEX acid waste systems.

- Rated for pedestrian traffic and available in sizes from 2" to 6".
- Floway™ drains can be optionally configured with adjustable strainers, round funnels, sediment baskets and plain end or threaded outlets.
- Adjustable feature allows easy leveling after pouring of finished floors.

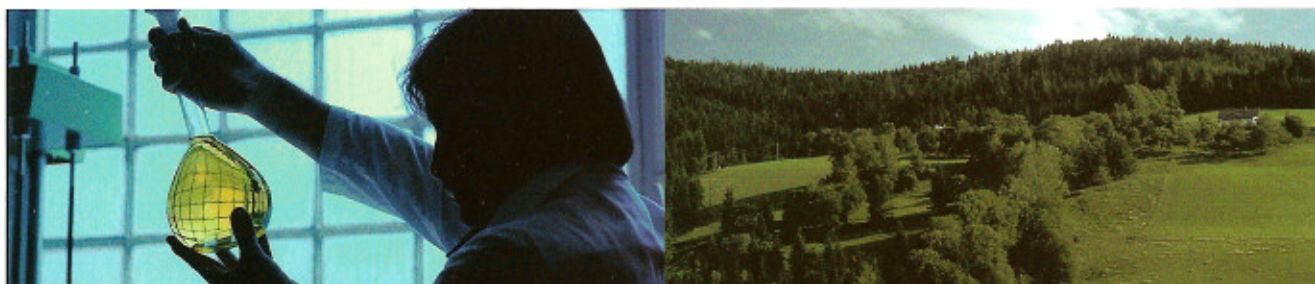


## Accessories



A complete range of accessories are available for use with IPEX acid waste systems, including:

- Oval and round cupsinks, faucets, solids interceptors, expansion joints and a wide selection of cobra clips, dilution traps, spacers and hangers.
- Transition adapters are also available for interfacing with glass or iron systems.



### MATERIALS & ATTRIBUTES CHART

Resin	Color	Schedule	Length (ft)	Size (in)	ASTM Rating	Classification
FRPP	Green	40	10/20	1½ to 12	V-1	Self extinguishing. Does not support combustion after flame is removed.
NFRPP	Black	40/80	20	1½ to 12	V-2	Suitable for locations where no burning classification is required.
FR-PVDF	Blue	40	10	1½ to 4	V-0	Self extinguishing. Meets ASTM E-84. Suitable for areas such as return-air plenums and other specialized applications.

IPEX acid waste systems are designed and manufactured to meet or exceed the requirements of the following standards organizations. A comprehensive list of compliance approvals is available on request.



Consult the IPEX Chemical Resistance Guide, available at [ipexinc.com](http://ipexinc.com), for compatibility of our acid waste systems with over 900 chemicals, at a full range of temperatures and concentrations.